



AA171408F-VRB-220V

Classic Flexi Bubbler Water Cooler

AA171408S-VRB-220V

Classic Stainless Bubbler Water Cooler

AA171408F-0001

Classic Flexi Bubbler Water Cooler with Glass Filler

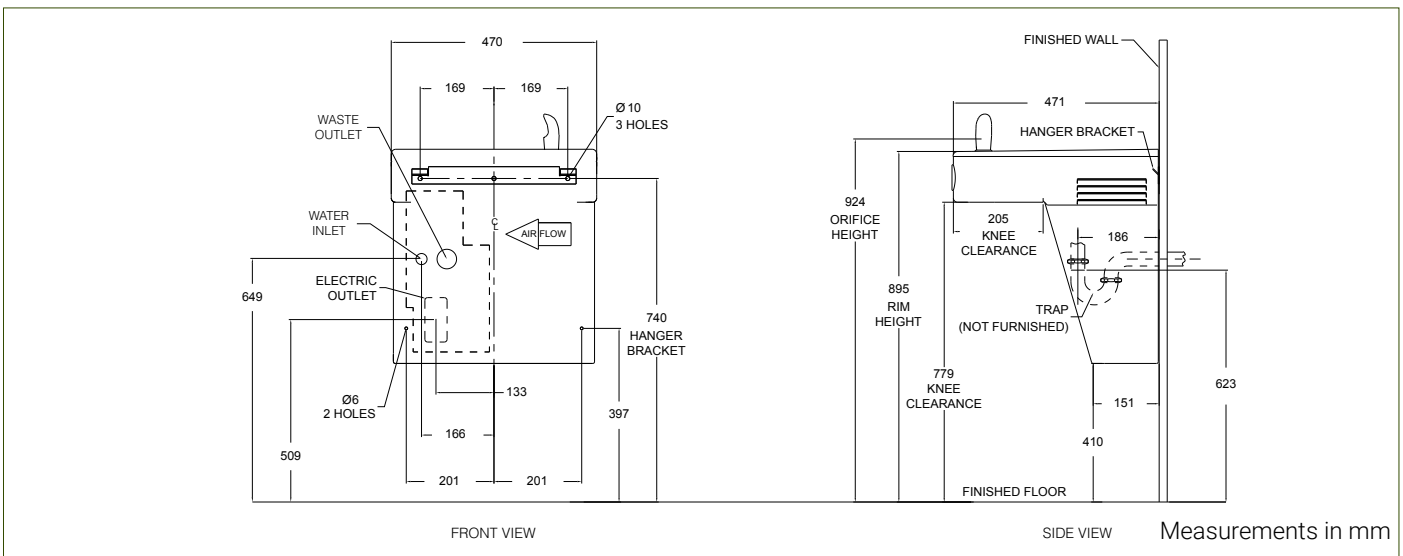
AA171408S-0001

Classic Stainless Bubbler Water Cooler with Glass Filler

Specification

Manufactured from stainless steel with all exposed surfaces in satin finish. Supplied with either a durable, vandal resistant stainless bubbler or an anti-microbial flexible bubbler, all Classic-series coolers are equipped with self-closing push button and non-squirt features. Valve includes flow adjuster and strainer. Integral perforated drain for hygiene & ease of cleaning. Smooth radiused design eliminates sharp corners. Fully concealed pipework and fixings.

Inlet Connection:	1/2" BSP
Outlet Connection:	40mm BSP
Water Pressure:	200 – 500 kPa
Basin & Housing:	1.6mm, 304 stainless steel
Force to activate:	≤ 22N
Power Requirement:	220VAC, 50HZ, single phase
Capacity:	30L/hr drinking water at 10°C (incoming 27°C, ambient 32°C)



Resources

[Installation Guide](#) - [Warranty & Cleaning Guide](#) - [CAD Drawing](#)

As improvements in the design and performance of Bubblers Australia products are continuous, specifications may be subject to change without notice. The illustrations and descriptions herein are applicable to production as of the date of this Technical Data Sheet. Revised 03/24 © 2024 by Bubblers Australia TD/ModelAA171408F-VRB-220V/0324