



AA111108S-VRB-220V

Classic Stainless Bubbler Water Cooler

AA111108F-0001

Classic Flexi Bubbler Water Cooler with Glass Filler

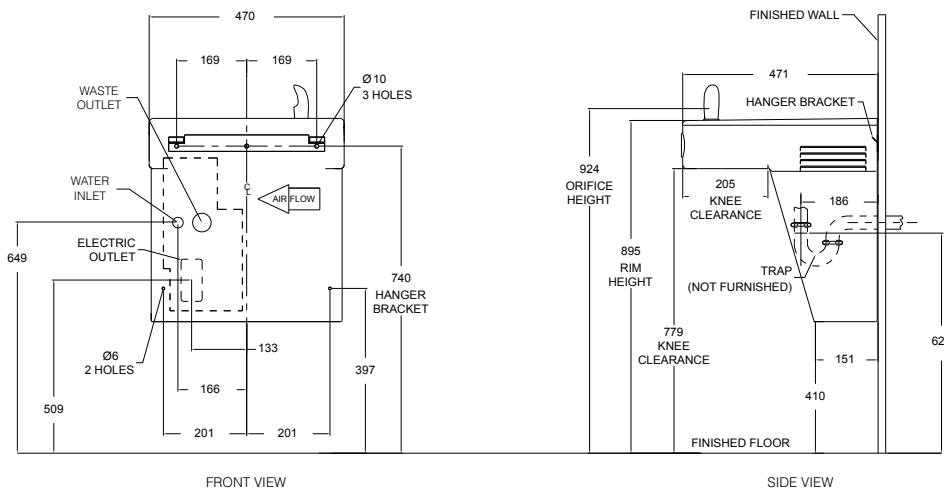
AA111108S-0001

Classic Stainless Bubbler Water Cooler with Glass Filler

Specification

Basin manufactured from stainless steel with all exposed surfaces in satin finish. Housing manufactured from galvanised steel in granite powder coat. Supplied with either a durable, vandal resistant stainless bubbler or an anti-microbial flexible bubbler, all Classic-series coolers are equipped with self-closing push button and non-squirt features. Valve includes flow adjuster and strainer. Integral perforated drain for hygiene & ease of cleaning. Smooth radiused design eliminates sharp corners. Fully concealed pipework and fixings.

| | |
|---------------------------|---|
| Inlet Connection: | 1/2" BSP |
| Outlet Connection: | 40mm BSP |
| Water Pressure: | 200 – 500 kPa |
| Basin: | 1.6mm, type 304 stainless steel |
| Housing: | Granite powder coated galvanised steel |
| Force to activate: | ≤ 22N |
| Power Requirement: | 220VAC, 50HZ, single phase |
| Capacity: | 30L/hr drinking water at 10°C (incoming 27°C, ambient 32°C) |



Measurements in mm

Resources

[Installation Guide](#) - [Warranty & Cleaning Guide](#) - [CAD Drawing](#)

As improvements in the design and performance of Bubblers Australia products are continuous, specifications may be subject to change without notice. The illustrations and descriptions herein are applicable to production as of the date of this Technical Data Sheet. Revised 03/24 © 2024 by Bubblers Australia TD/ModelA111108S-VRB-220V/0324